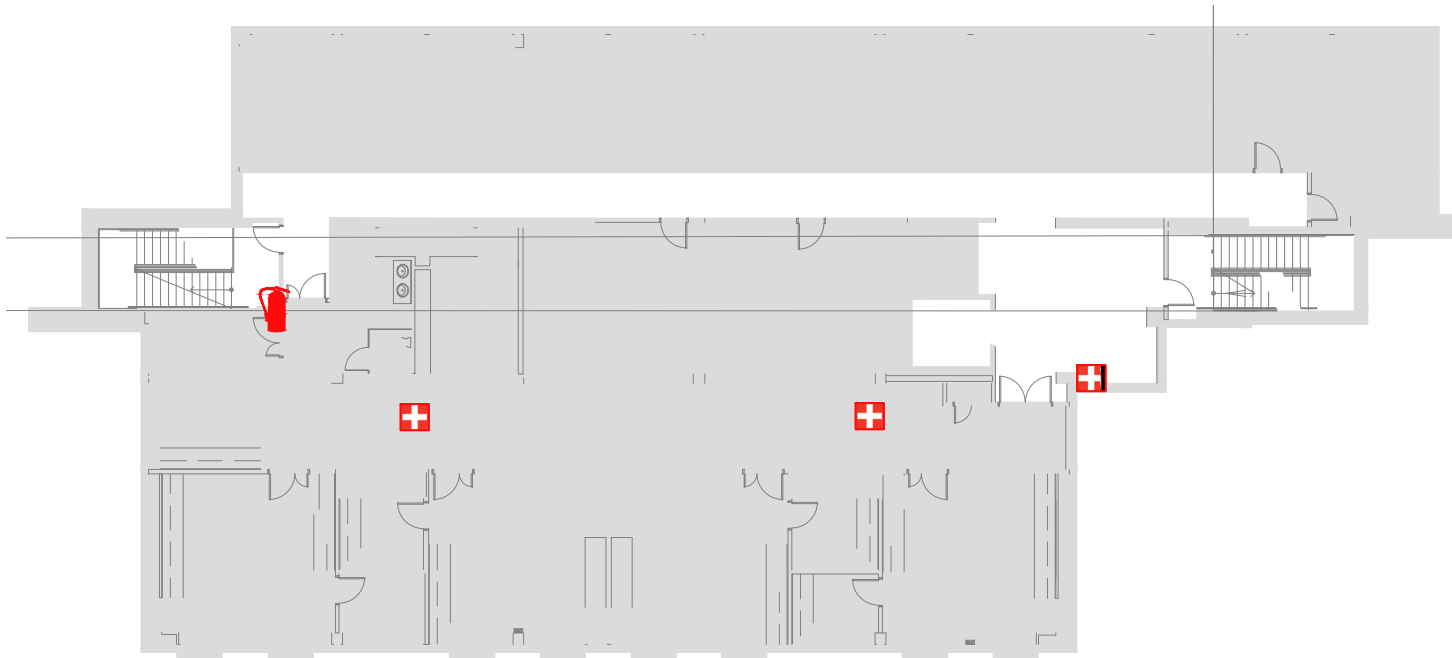


# FLOOR 3

**CALL 911**



FIRE ALARM WILL SOUND AS CHIRPING ELECTRICAL HORN, STROBE LIGHT WILL FLASH.

## PERSONS WITH DISABILITIES

CALL 911, REPORT YOUR LOCATION, PROCEED TO THE NEAREST EXIT OR EXIT STAIRWELL AND AWAIT ASSISTANCE.



## EVACUATION SITE

### SYMBOL LEGEND

EMERGENCY EGRESS PATH



FIRE EXTINGUISHER



ALARM PULL STATION



YOU ARE HERE