

# FLOOR 8

**CALL 911**

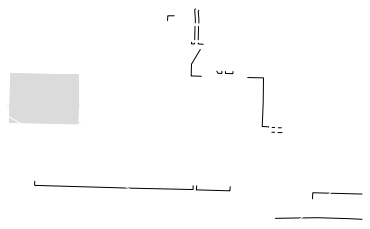
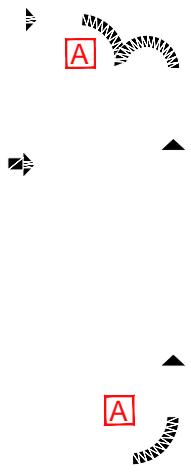
**FIRE  
POLICE  
MEDICAL**

IN CASE OF FIRE, PULL  
FIRE ALARM, USE EXIT



FIRE ALARM WILL SOUND AS  
CHIRPING ELECTRICAL HORN,  
STROBE LIGHT WILL FLASH.

**PERSONS  
WITH  
DISABILITIES**



LAST REVISION: AUGUST 2016

ALL 911, REPORT YOUR LOCATION, PROCEED TO THE NEAREST EXIT OR EXIT STAIRWELL AND AWAIT ASSISTANCE. ALARM PULLATION EMERGENCY EGRESS